

NEWHALL COUNTY WATER DISTRICT

Lead and Copper Testing

NCWD works with the Division of Drinking Water (DDW) to conduct lead and copper testing on a triennial basis as mandated by the Lead and Copper Rule (also referred to as LCR).

The LCR requires systems to monitor drinking water at the customer taps. If lead concentrations exceed an action level of 15 ug/L or copper concentrations exceed an action level of 1300 ug/L in more than 10% of the customer taps sampled, NCWD will undertake a number of additional actions to control corrosion.

Infants and young children are typically more vulnerable to lead in drinking water than the general population. It is possible that lead levels at your home may be higher than at other homes in the community as a result of materials used in your home's plumbing. If you are concerned about elevated lead levels in your home's water, you may wish to have your water tested and/or flush your tap for 30 seconds to 2 minutes before using tap water. Additional information is available from the USEPA Safe Drinking Water Hotline at (1-800-426-4791).

The data tables (right) show the latest lead and copper testing results available for all four NCWD service areas. The above map, depicting the approximate sampling locations, is also available in more detail on page two.



The Mission of NCWD is to provide quality water service at a reasonable cost by practicing careful stewardship of natural resources, utilizing innovative measures, and providing a quality work environment.

Newhall System

| | 90th Percentile | No. of Sites Tested | No. of Sites Above the AL |
|--------|-----------------|---------------------|---------------------------|
| Copper | 1100 ug/L | 30 | 2 |
| Lead | 2.7 ug/L | 30 | 2 |
| Year | 2015 | 2015 | 2015 |

Castaic System

| | 90th Percentile | No. of Sites Tested | No. of sites Above the AL |
|--------|-----------------|---------------------|---------------------------|
| Copper | 620 ug/L | 20 | 0 |
| Lead | 2.9 ug/L | 20 | 0 |
| Year | 2015 | 2015 | 2015 |

Pinetree System

| | 90th Percentile | No. of Sites Tested | No. of Sites Above the AL |
|--------|-----------------|---------------------|---------------------------|
| Copper | 250 ug/L | 20 | 0 |
| Lead | 2.6 ug/L | 20 | 0 |
| Year | 2015 | 2015 | 2015 |

Tesoro System

| | 90th Percentile | No. of Sites Tested | No. of Sites Above the AL |
|--------|-----------------|---------------------|---------------------------|
| Copper | 350 ug/L | 20 | 0 |
| Lead | 2.5 ug/L | 20 | 1 |
| Year | 2014 | 2014 | 2014 |

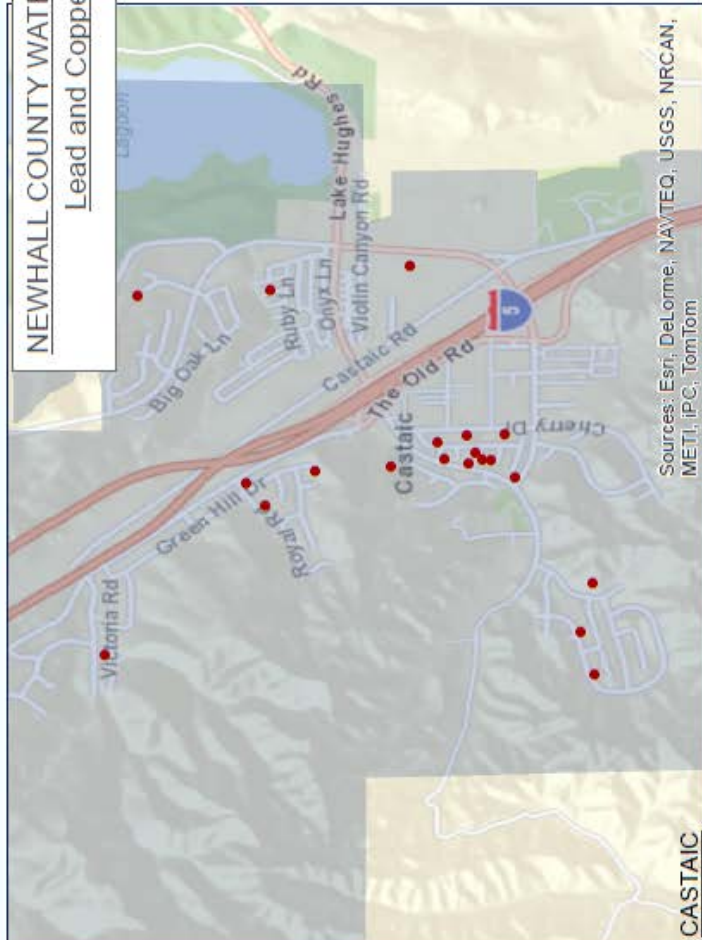
NCWD

23780 North Pine Street
P.O Box 220970
Santa Clarita, CA 91322
(661) 259-3610
8:00am – 5:00pm (M-F)

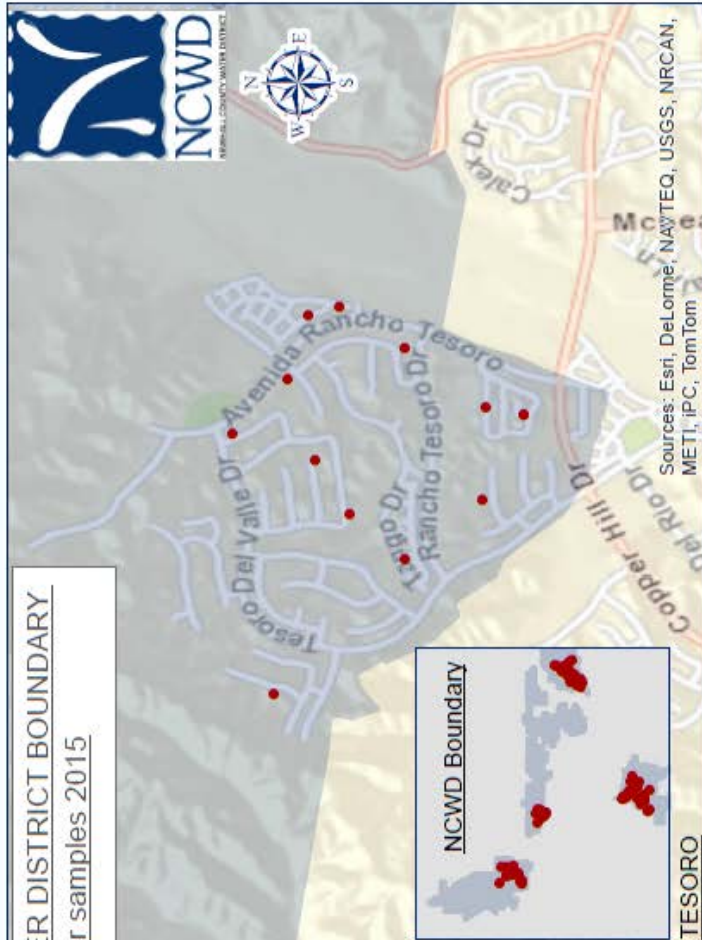
Additional Resources:

www.epa.gov
www.waterboards.ca.gov

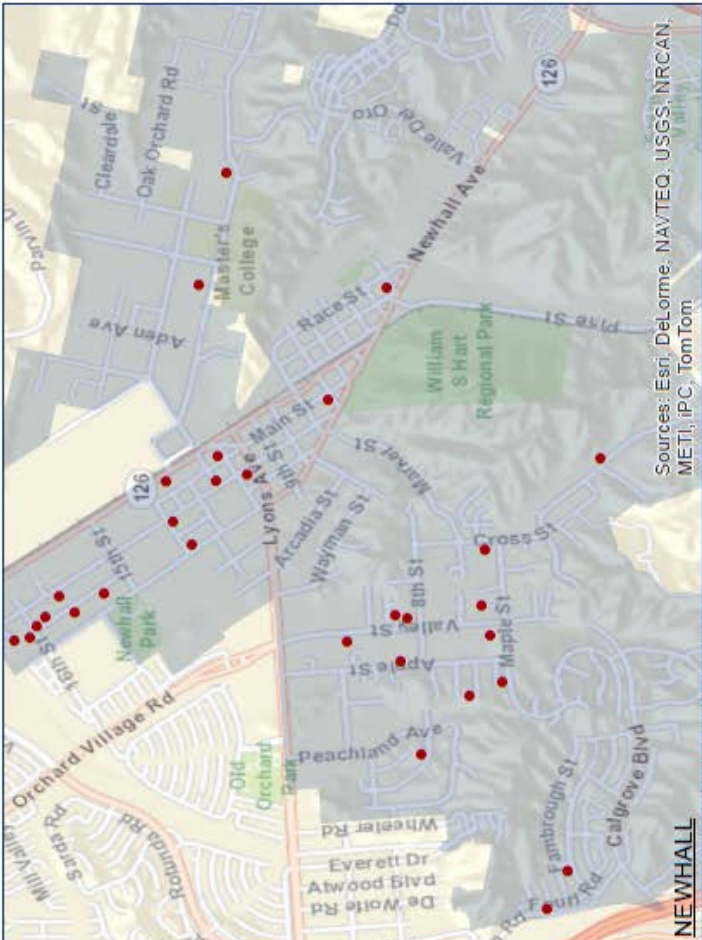
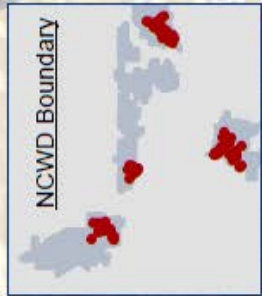
NEWHALL COUNTY WATER DISTRICT BOUNDARY
Lead and Copper samples 2015



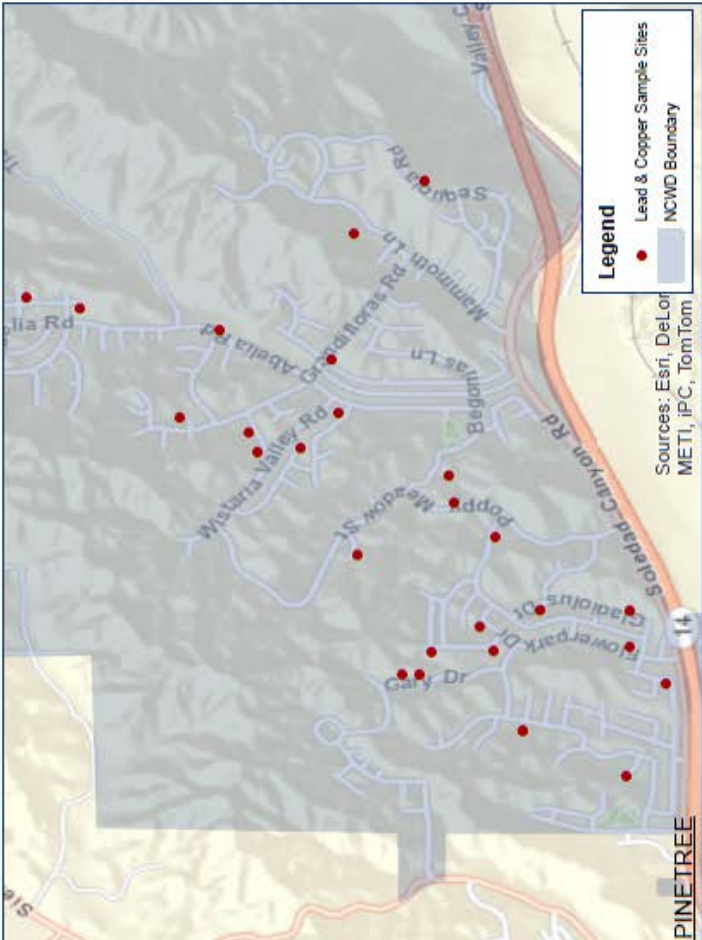
CASTAIC



TESORO



NEWHALL



PINETREE

Legend

- Lead & Copper Sample Sites
- NCWD Boundary