

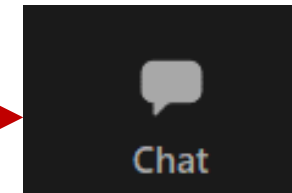
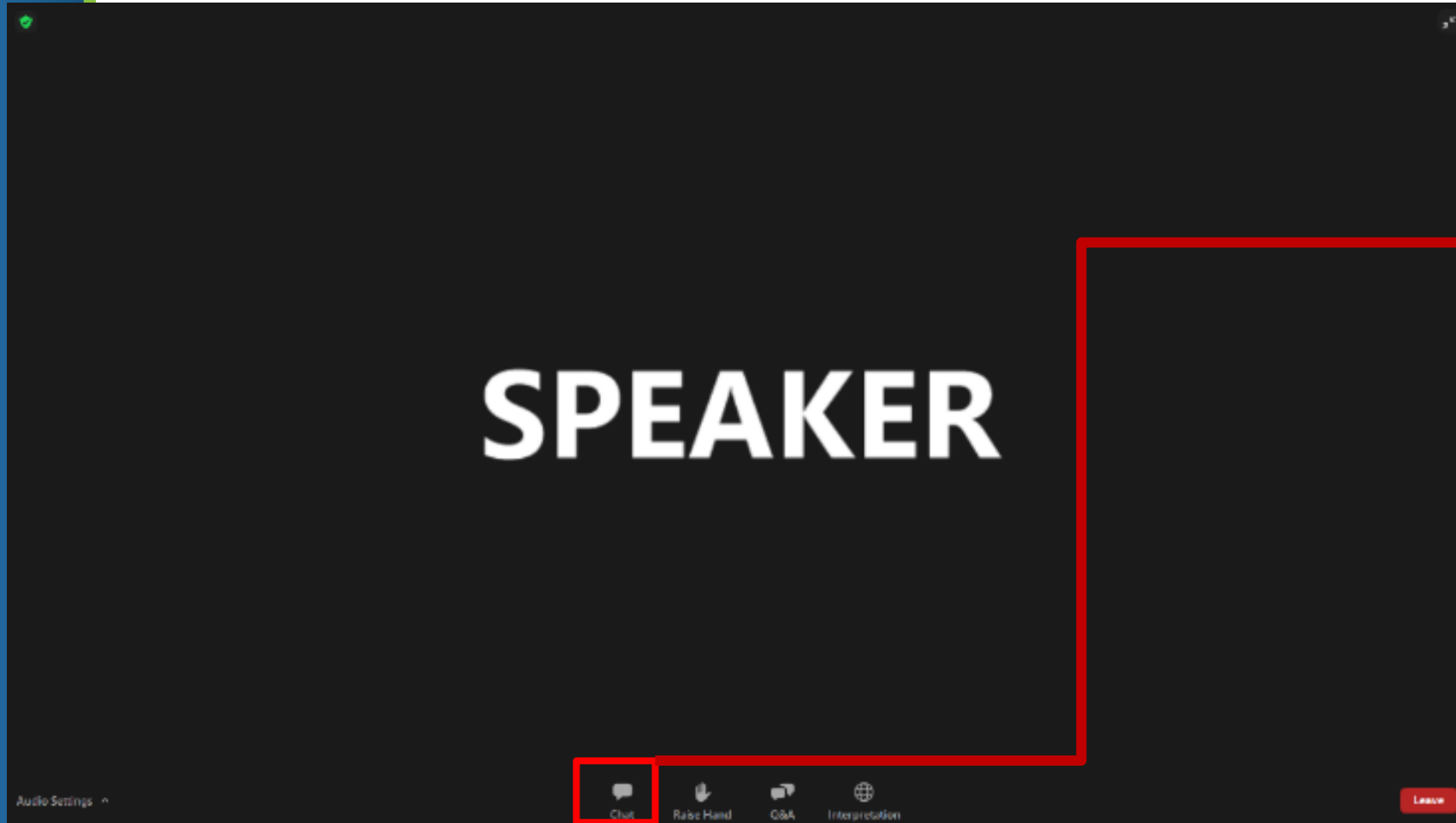


SCV
WATER

S Wells PFAS Treatment Project

Public Engagement Meeting
November 2, 2022

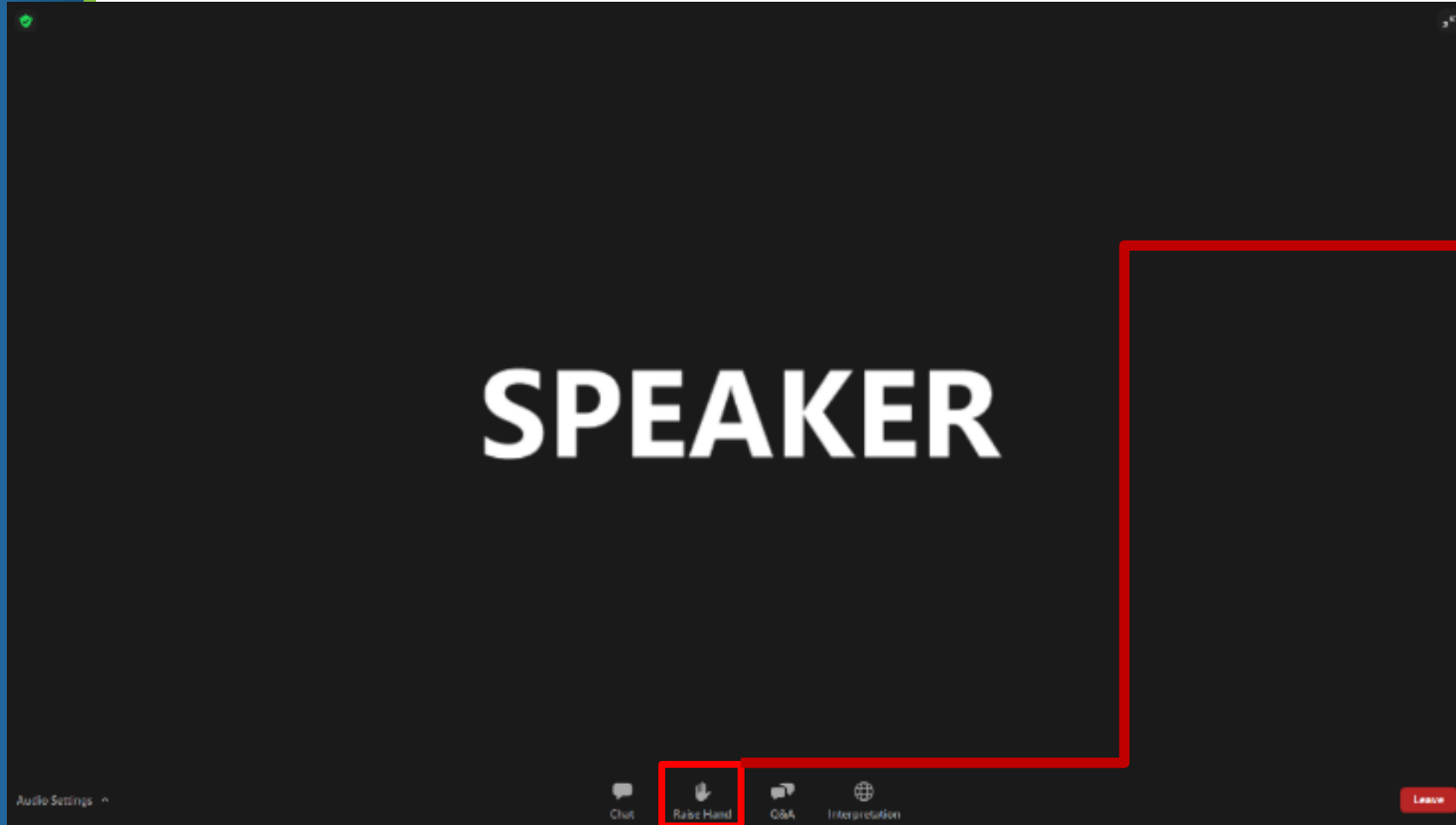
How to use Zoom



Comments and questions can be submitted through the chat window.



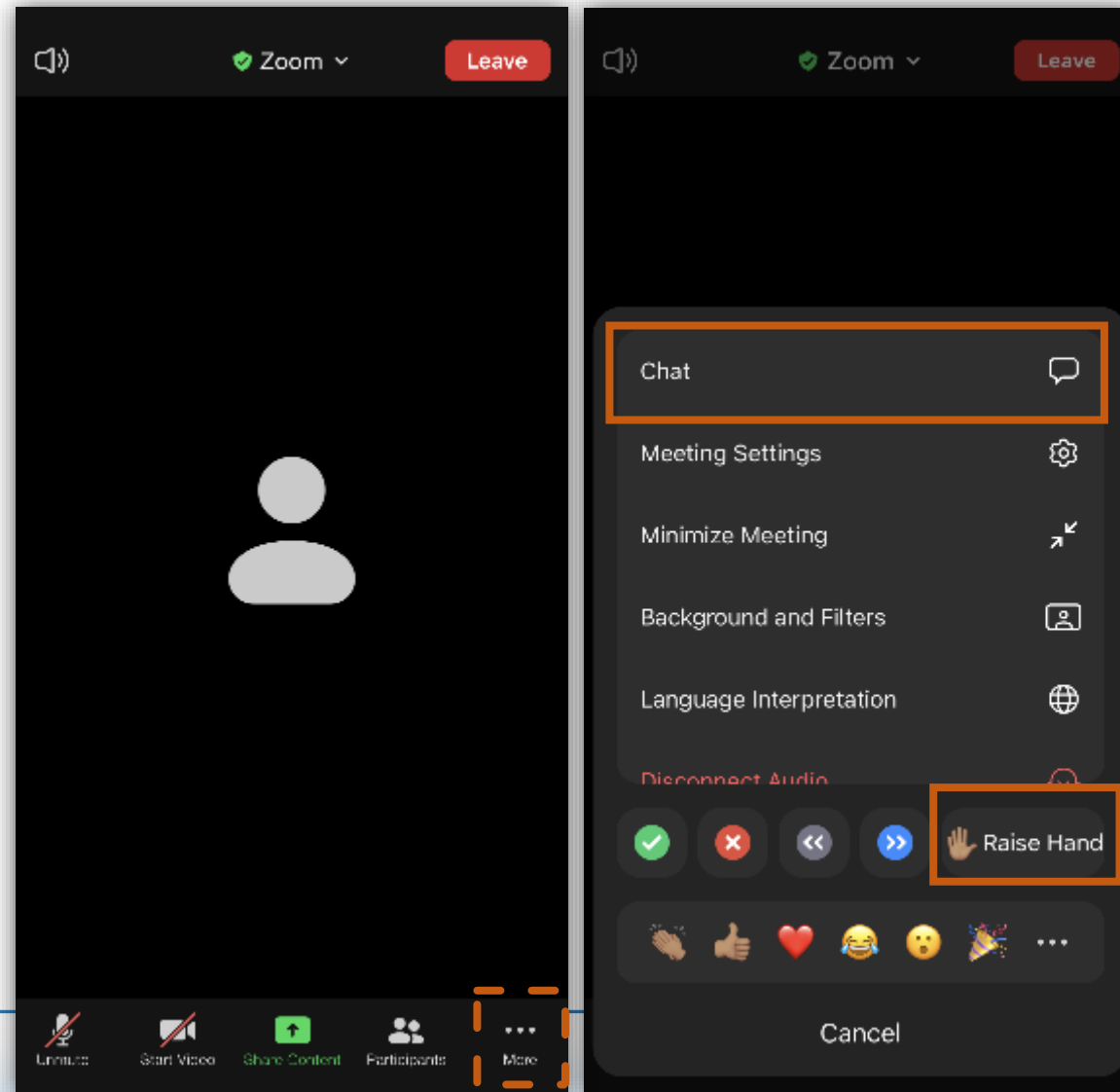
How to use Zoom



During the meeting, if you would like to speak over the audio, please raise your hand to be unmuted (otherwise questions and comments can be submitted through the Chat window)



On Your Phone



If you are calling in,
please enter *9 to
raise hand



S Wells Treatment Facility

AGENDA

6:00 PM

Welcome

6:05 PM

Project Overview

- Background
- Community Engagement - What we Heard

6:15 PM

Preliminary Design

6:30 PM

Q & A

7:30 PM

Closing

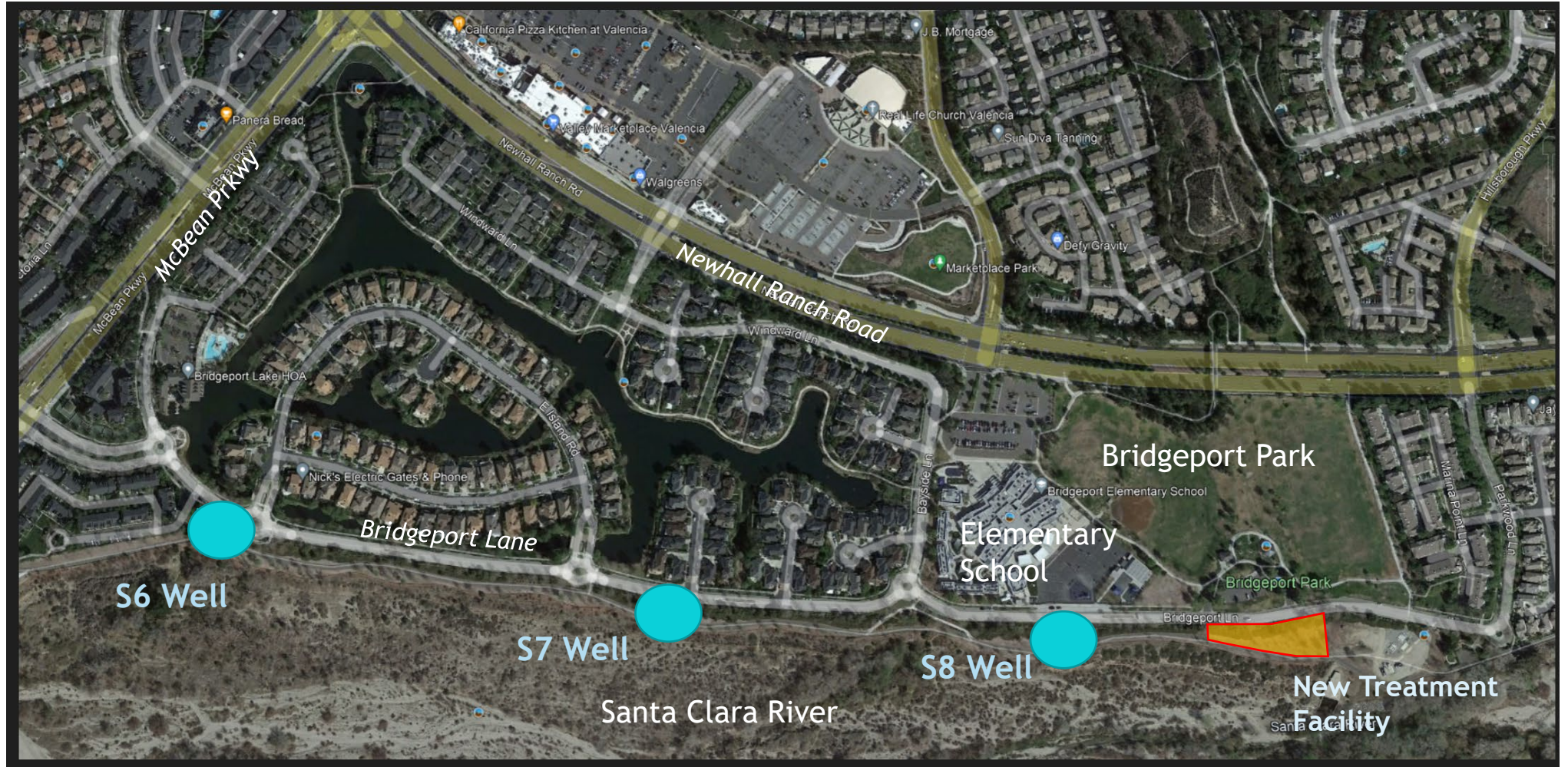


The background features a white central area framed by curved, layered bands of dark blue and light green. The bands are positioned at the top and bottom of the page, creating a sense of depth and movement.

Project Overview

S Wells Locations

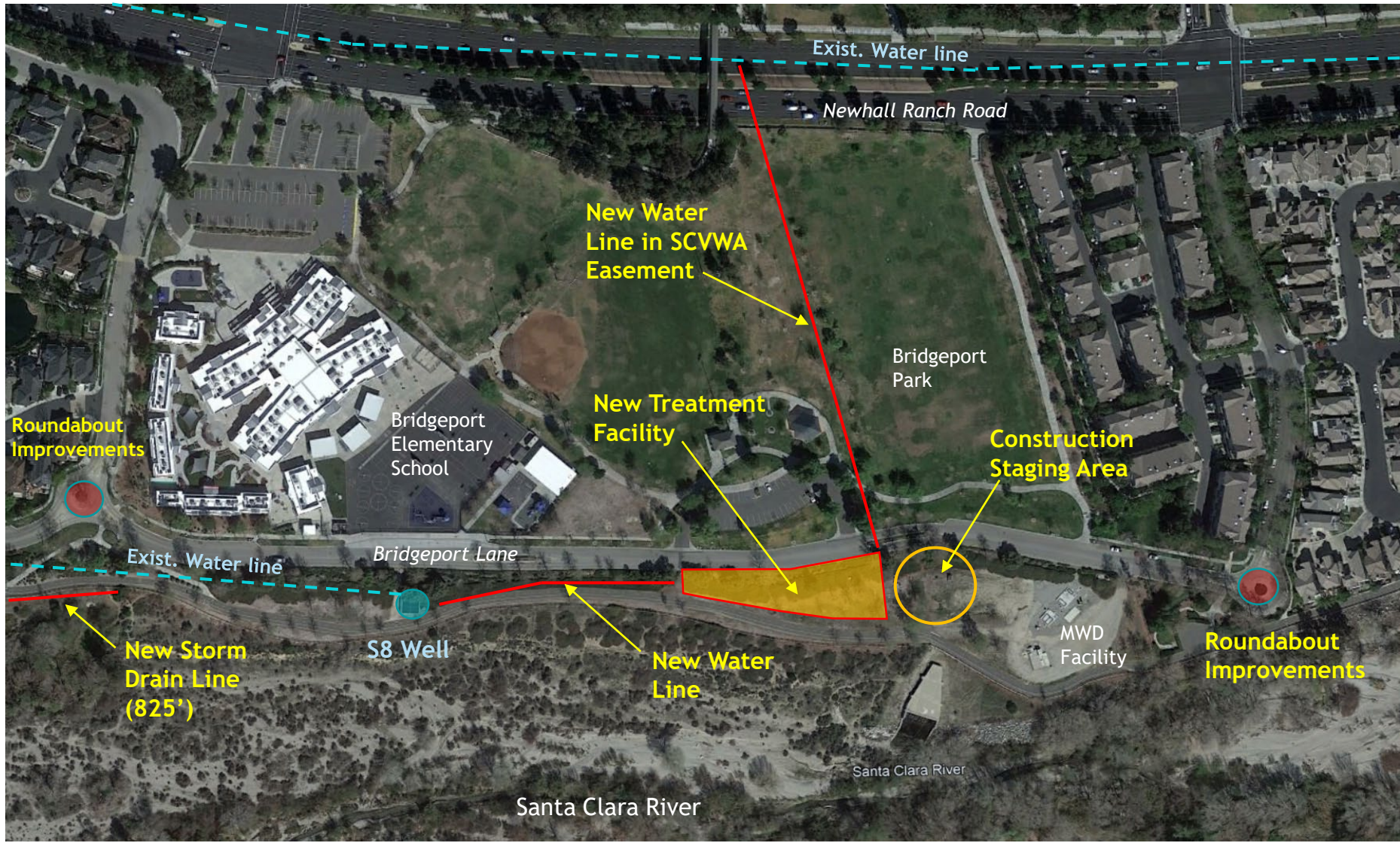
Permitted Capacity of up to 9,677 Acre-Feet per year



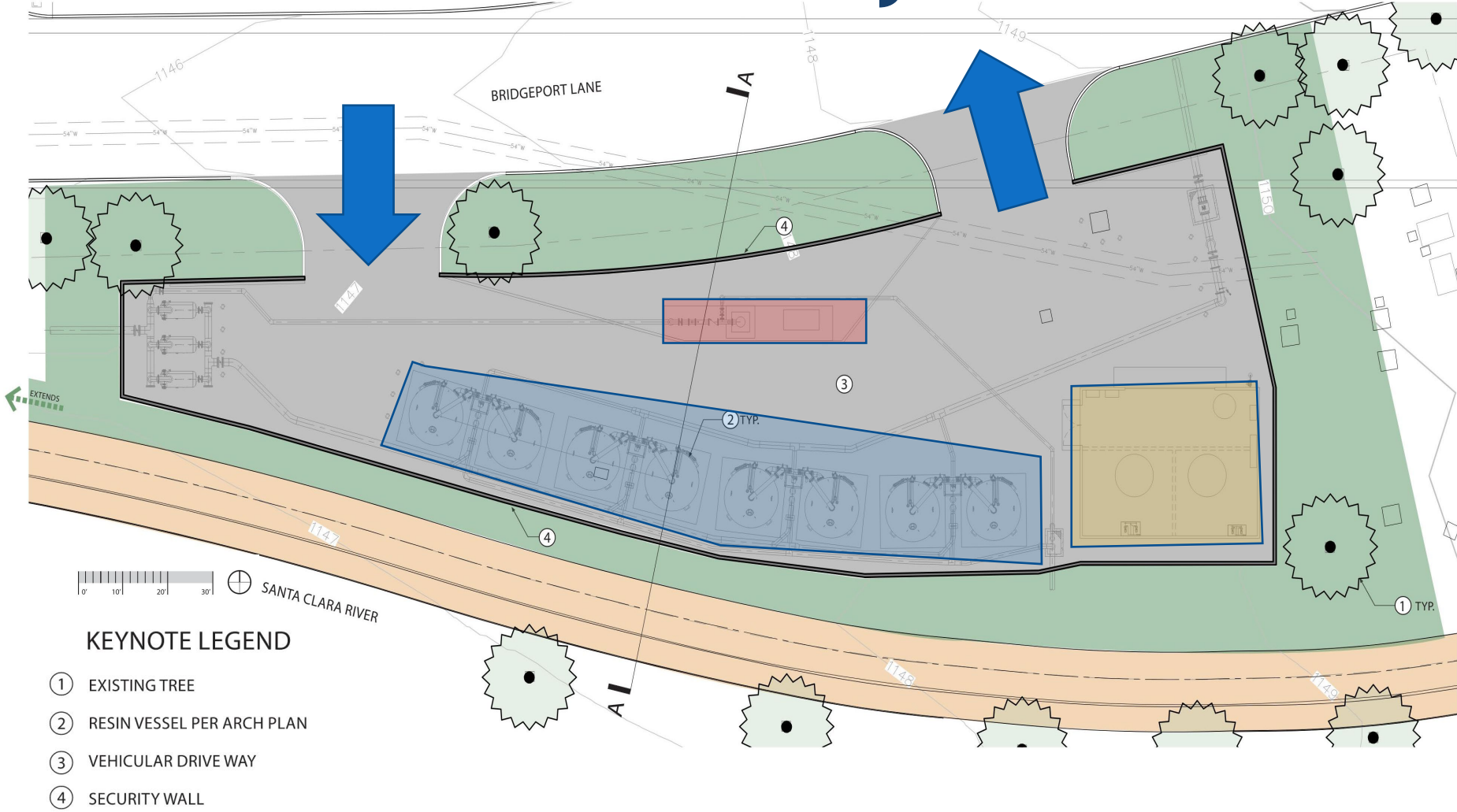
Potential S Wells Treatment Site Locations



S Wells Treatment Facility Location



S Wells Treatment Facility Site Plan



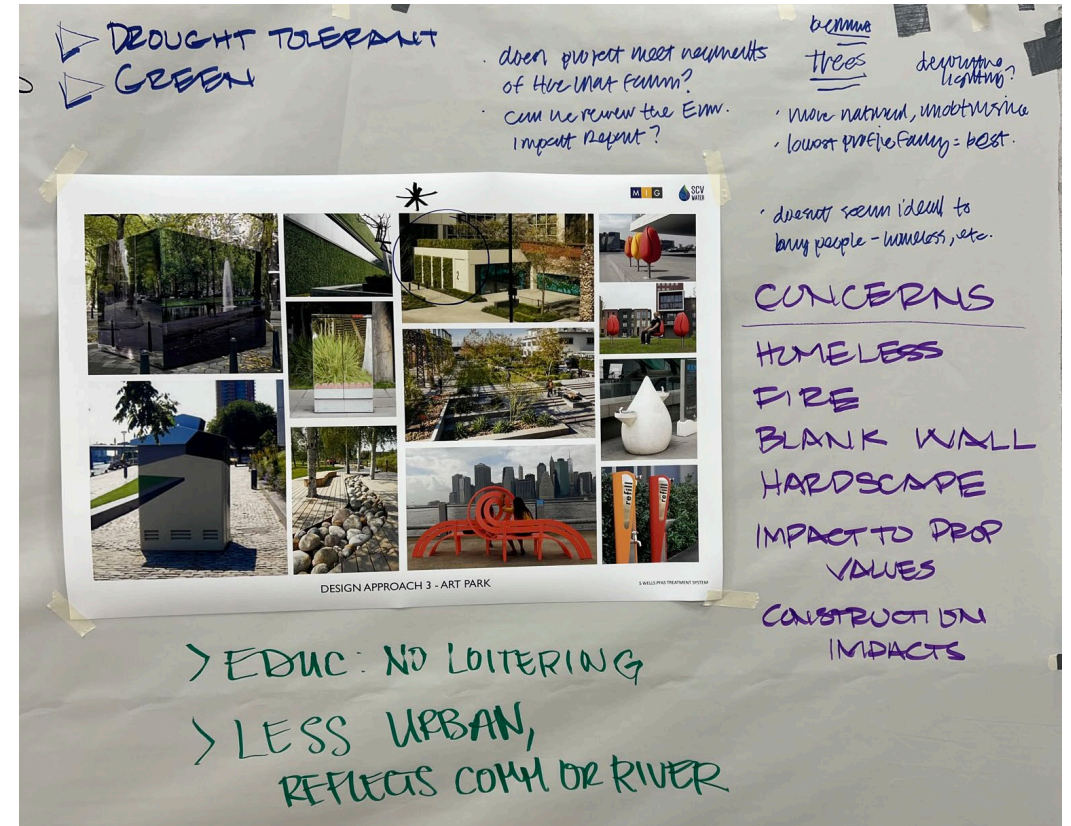
KEYNOTE LEGEND

- ① EXISTING TREE
- ② RESIN VESSEL PER ARCH PLAN
- ③ VEHICULAR DRIVE WAY
- ④ SECURITY WALL

What we heard



What we heard



What we heard

- View from adjacent neighborhood
- High profile wall
- More vehicles and increased speeds
- Operations associated activities
- Hardscape and industrial treatments/surfaces



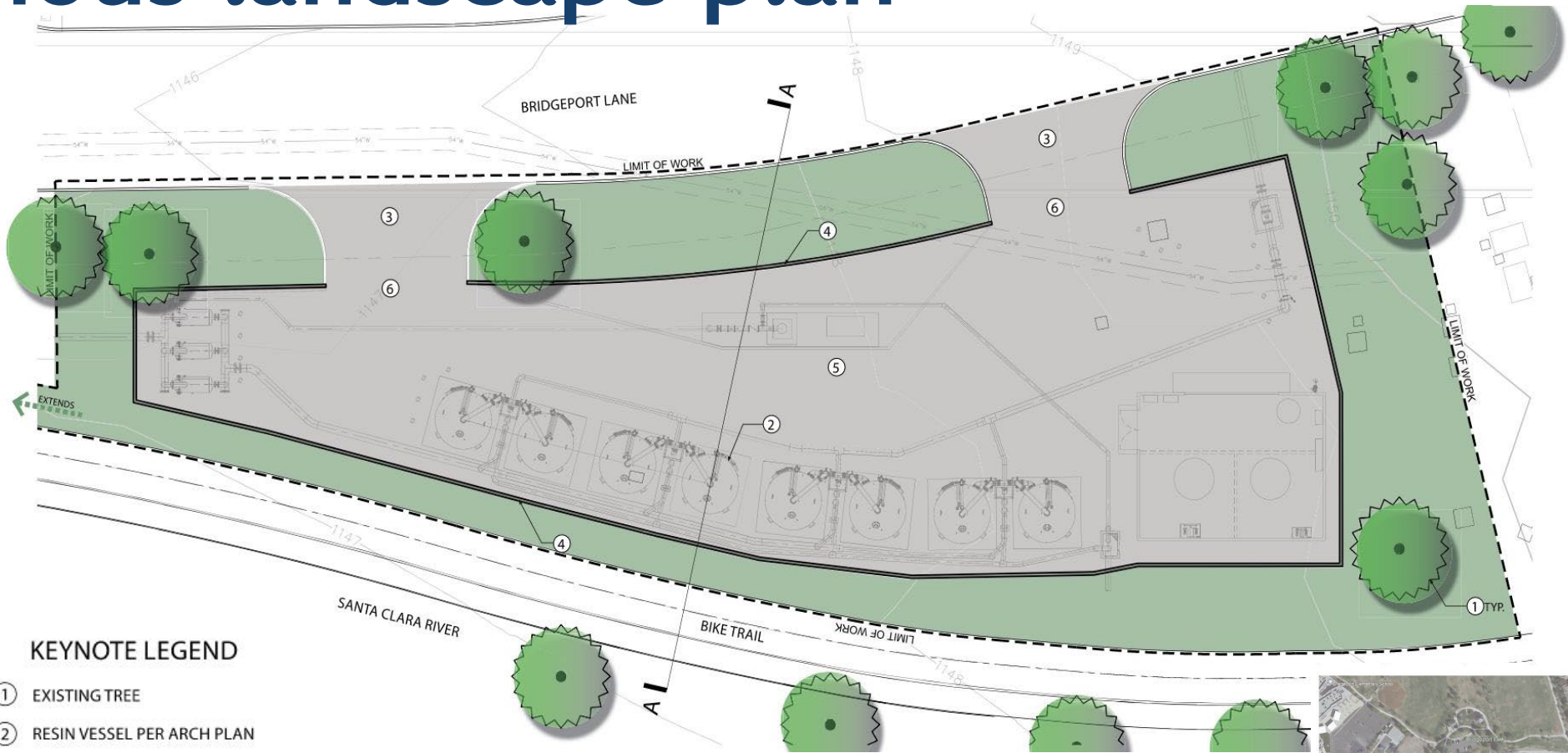
What we heard

- Blend design and landscaping to environment
- Include greening /vegetation
- Use drought tolerant plantings
- Incorporate elements that screen facility

The background features a white central area framed by curved, overlapping bands of dark blue and light green. The bands curve from the top and bottom edges towards the center, creating a sense of depth and movement.

Design Response

Previous landscape plan

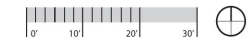


KEYNOTE LEGEND

- ① EXISTING TREE
- ② RESIN VESSEL PER ARCH PLAN
- ③ VEHICULAR DRIVE WAY
- ④ ENCLOSURE WALL
- ⑤ PROPOSED ENCLOSURE
- ⑥ VEHICULAR GATE



KEY MAP



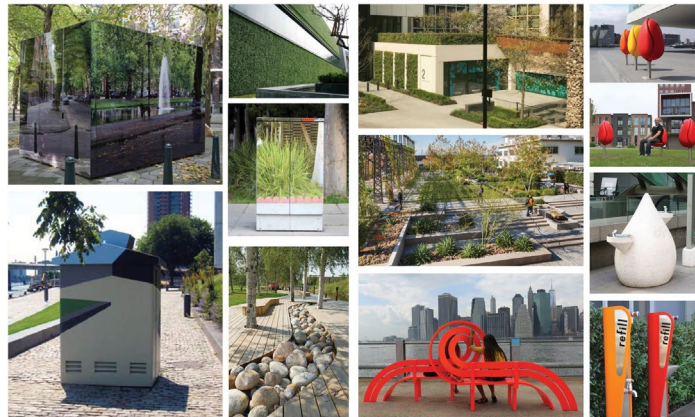
Previous Design Approach



Community
Courtyard
+
River
Garden



Art Park



Existing conditions

BRIDGEPORT LANE



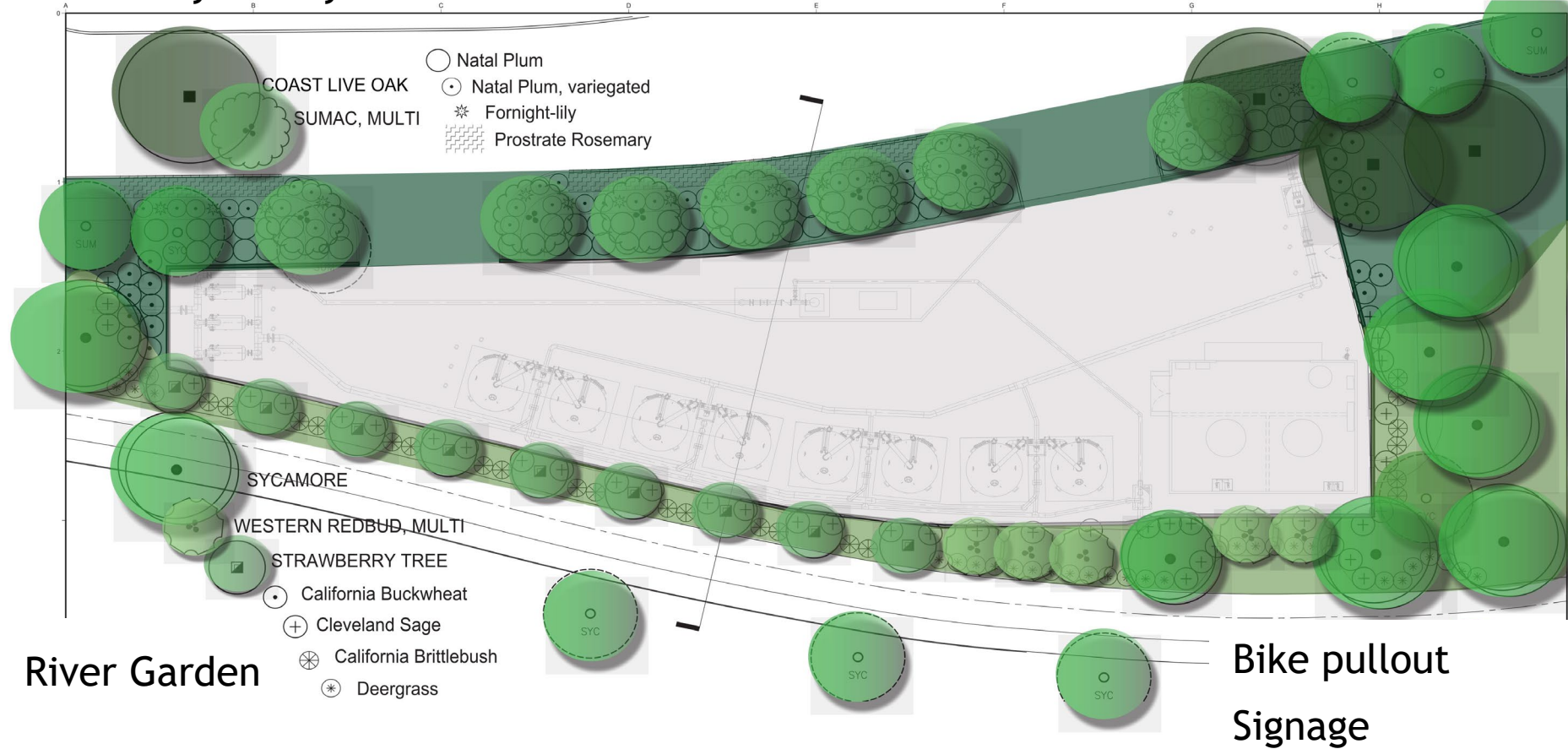
Existing conditions

BIKE PATH

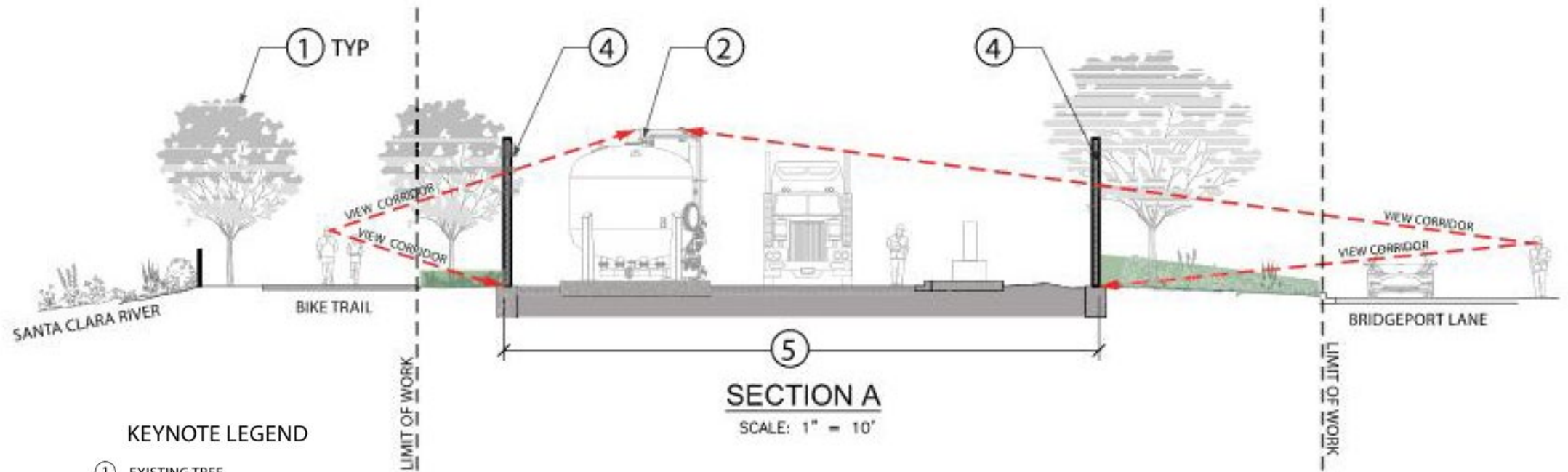


Updated landscape plan

Community Courtyard



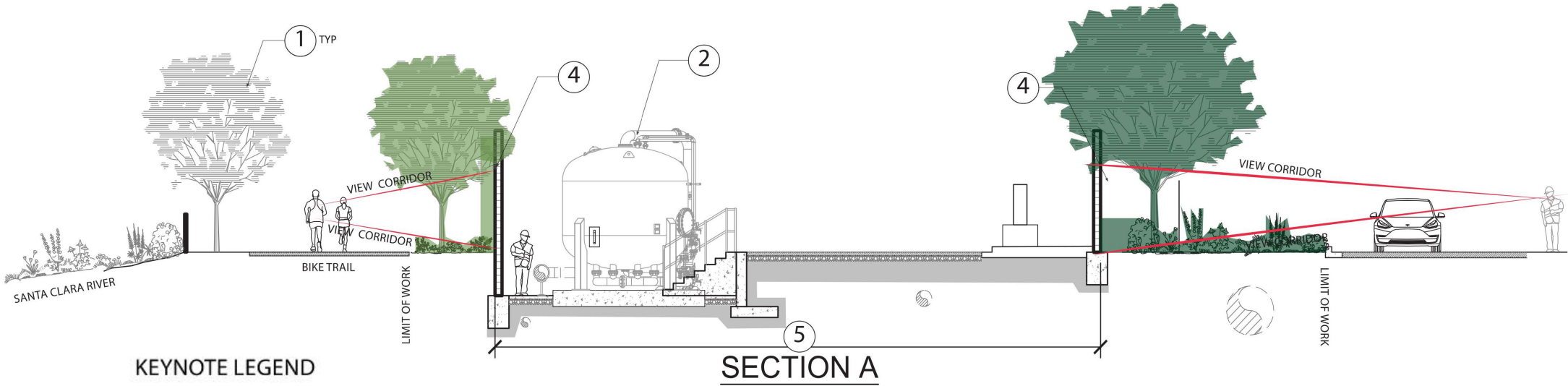
Previous section view



KEYNOTE LEGEND

- ① EXISTING TREE
- ② RESIN VESSEL PER ARCH PLAN
- ③ VEHICULAR DRIVE WAY
- ④ ENCLOSURE WALL
- ⑤ PROPOSED ENCLOSURE
- ⑥ VEHICULAR GATE

Updated section view



KEYNOTE LEGEND

- ① EXISTING TREE
- ② RESIN VESSEL PER ARCH PLAN
- ③ VEHICULAR DRIVE WAY
- ④ ENCLOSURE WALL
- ⑤ PROPOSED ENCLOSURE
- ⑥ VEHICULAR GATE

Landscape Materials

BRIDGEPORT LANE PLANT PALETTE



Quercus agrifolia
Live Oak



Searsia lancea
African Sumac, multi-trunk



Carissa macrocarpa
Natal Plum



Dietes bicolor
Fortnight Lily



Rosemarinus officinalis 'Prostratus'
Rosemary, trailing

BIKE PATH



Platanus racemosa
California Sycamore



Arbutus marina
Strawberry Tree



Cercis occidentalis
Western Redbud



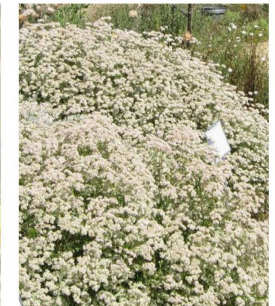
Muhlenbergia rigens
Deergrass



Salvia clevelandii
Cleveland Sage



Encelia farinosa
California Brittlebush



Eriogonum fasciculatum 'Warriner Lytle'
Warriner Lytle Buckwheat



Landscape Materials



Landscape Materials



Landscape Materials



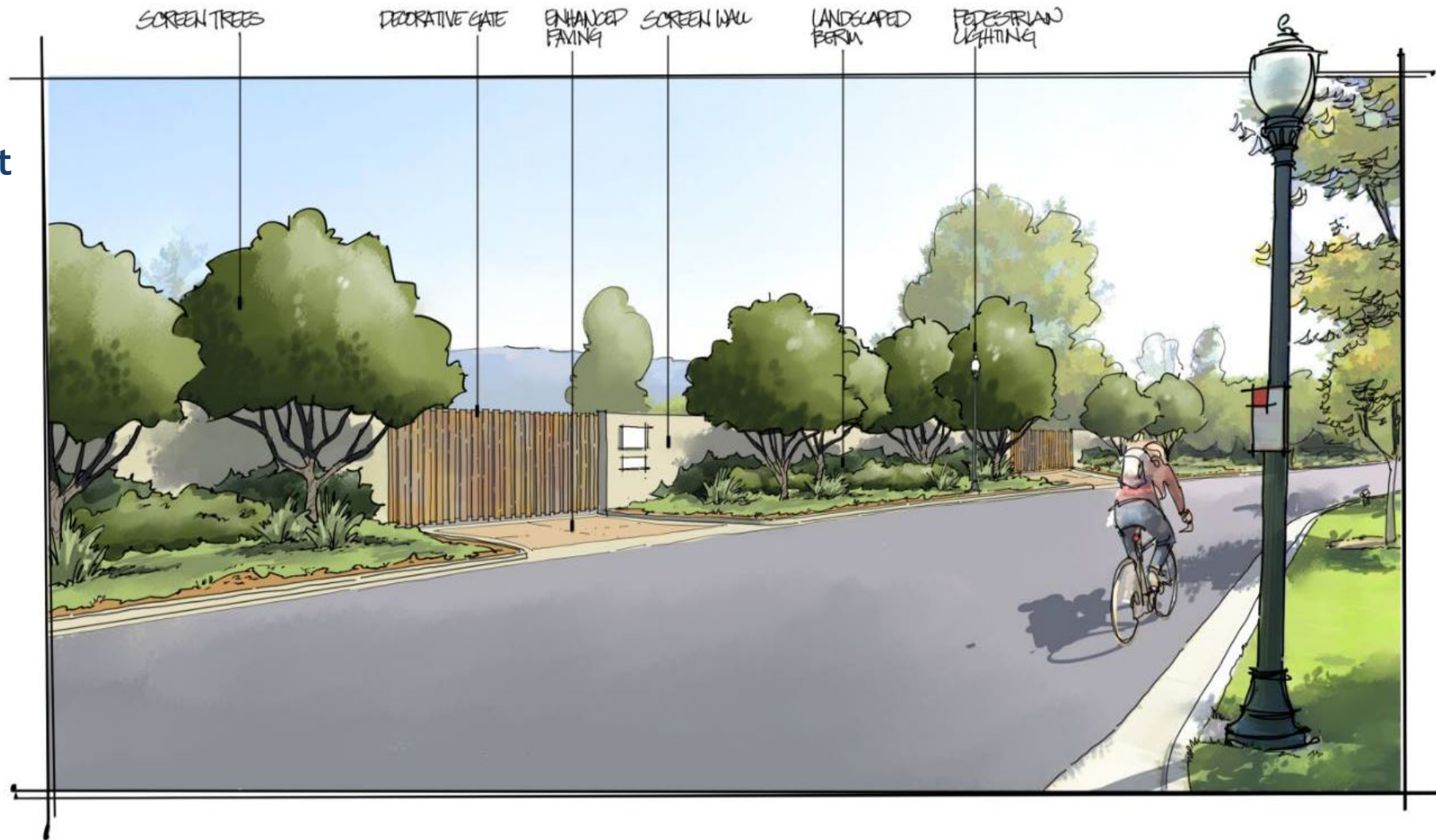
Perspective

Existing at
Bridgeport
Lane



Perspective

Facility at
Bridgeport
Lane



Questions & Comments



Thank You!

For more information :

Email: swells@scvwa.org

Phone: 661-705-7253

Or visit our website at:

<https://yourSCVwater.com>

