



S Wells PFAS Treatment Project

Public Engagement Meeting
August 31, 2022

S Wells Treatment Facility

AGENDA

6:00 Welcome

6:05 PM Presentation

Q&A

6:30 PM Facilitated Discussion

- What elements of this approach do you like?
- Are there things you would change?
- Is there anything missing?

7:45 PM Wrap up

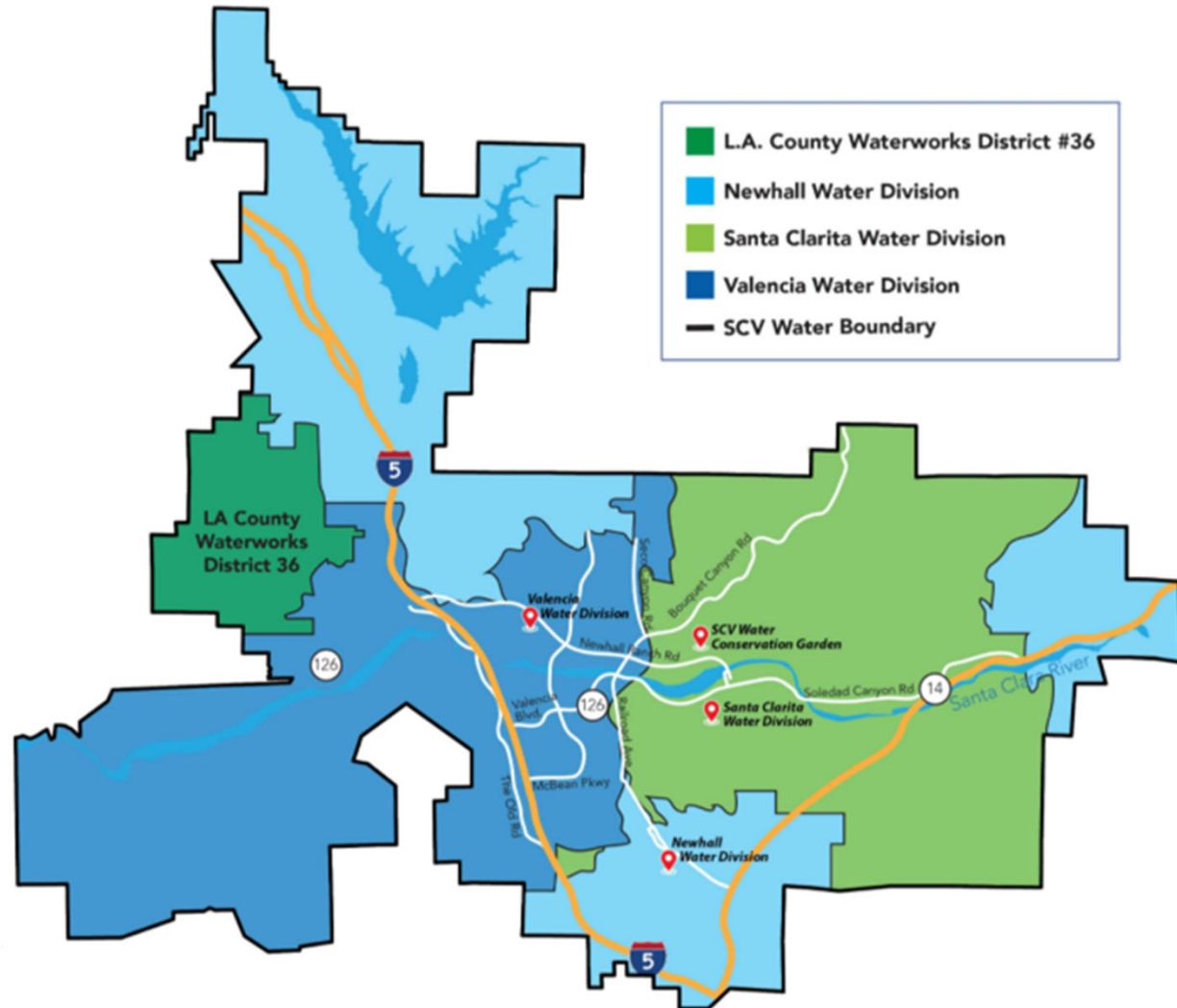
8:00 PM Closing





SCV WATER

- Approximately 73,000 service connections for ~273,000 residents
- Service area covers approx. 195 square miles or 124,000 acres
- Over 67,000 acre-ft of water provided in 2021.



WHERE DOES OUR WATER COME FROM?

SANTA CLARITA VALLEY WATER SUPPLY PORTFOLIO



IMPORTED WATER (STATE WATER PROJECT)

About half of our water comes from the Sierra Nevada range. It flows off the mountains then through the delicate Sacramento-San Joaquin Delta before reaching the Santa Clarita Valley via the State Water Project aqueduct.

GROUNDWATER

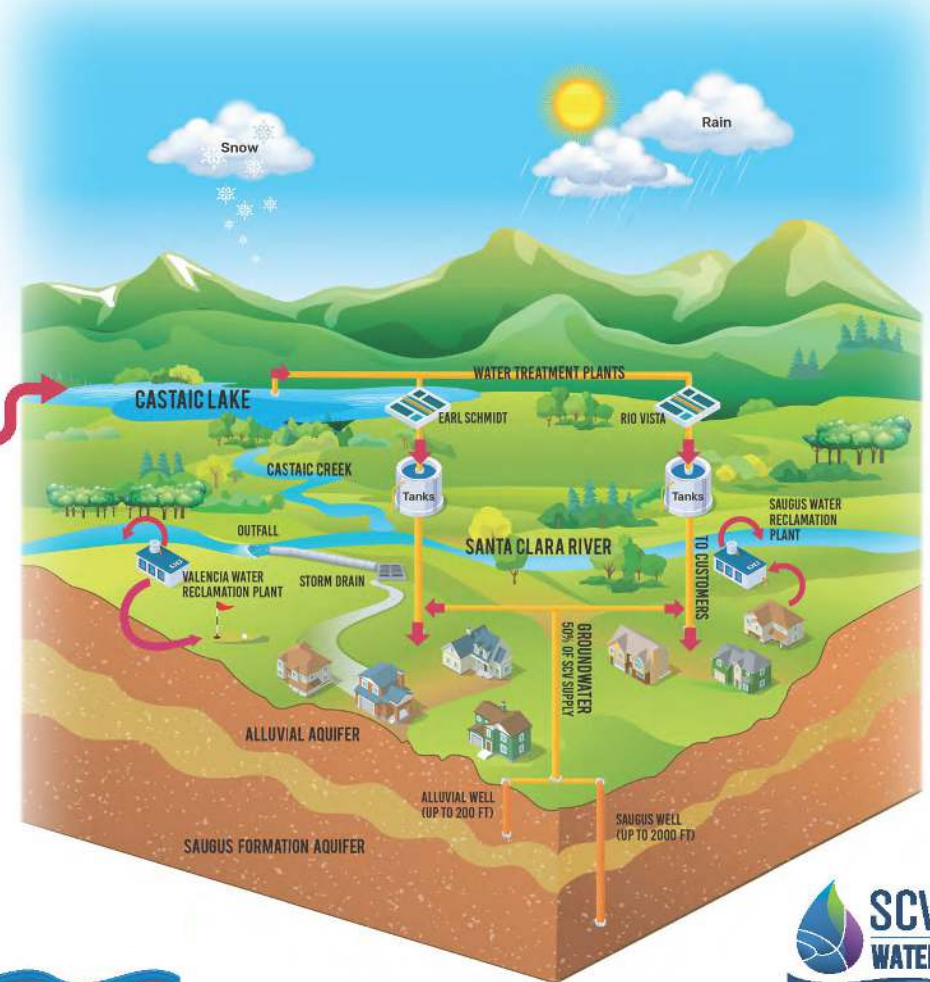
Groundwater is local, sustainable and cost-effective. It represents about half of our supply in an average year. A series of wells pump the groundwater into our system.

RECYCLED WATER

SCV Water has the opportunity to significantly expand its recycled water production in the coming years. The long-term goal is to serve more than 10,000 acre-feet of recycled water – roughly 45 times what is served today.

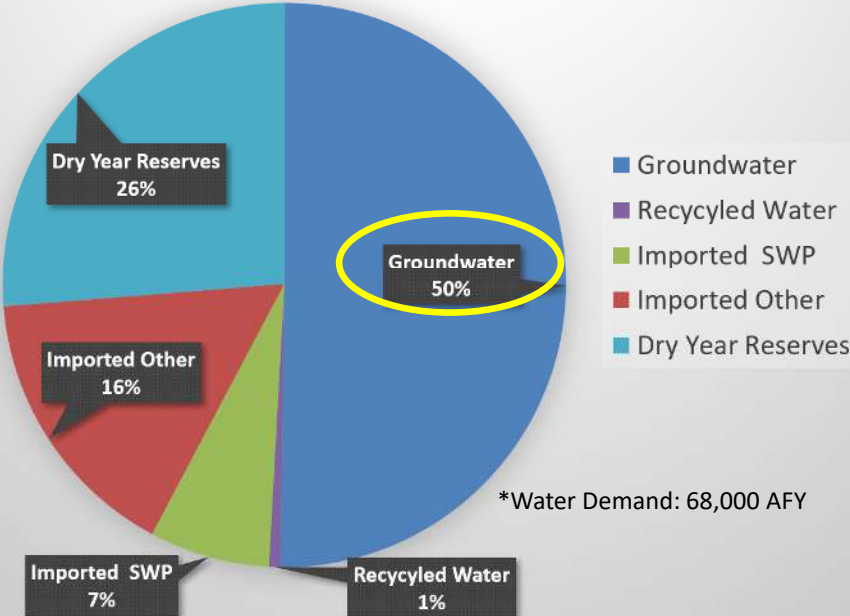
WATER BANKING

SCV Water stores ("banks") about 141,000 acre-feet of water in Kern County. We can call for this water in times of need.

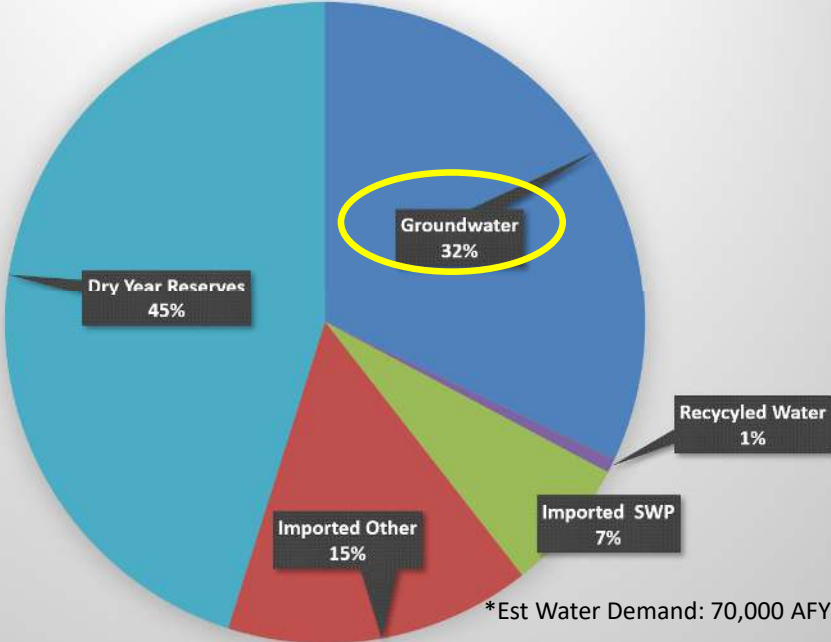


SCVWA Water Supply Use

2014 Water Supplies Used



2022 Water Supplies Used



*Dry year Condition

PFAS (Per- and polyfluoroalkyl substances)

PFAS are in **1,000s** of commonly used **products** and the **environment**



- **PFAS are found in communities throughout CA AND the nation**
 - Remnant traces of PFAS in the SCV are believed to be from consumer products/industrial uses
- **SCV Water is closely monitoring PFAS in our water supply**
 - Our water is thoroughly tested treated thousands of times per year
 - Meets some of the highest water-quality standards in the world
 - We immediately remove wells that exceed state-set PFAS levels



PFAS Treatment



N Wells - Ion-Exchange PFAS Treatment Vessels

*For more Information on PFAS
visit us at:*

www.yourscvwater.com/pfas

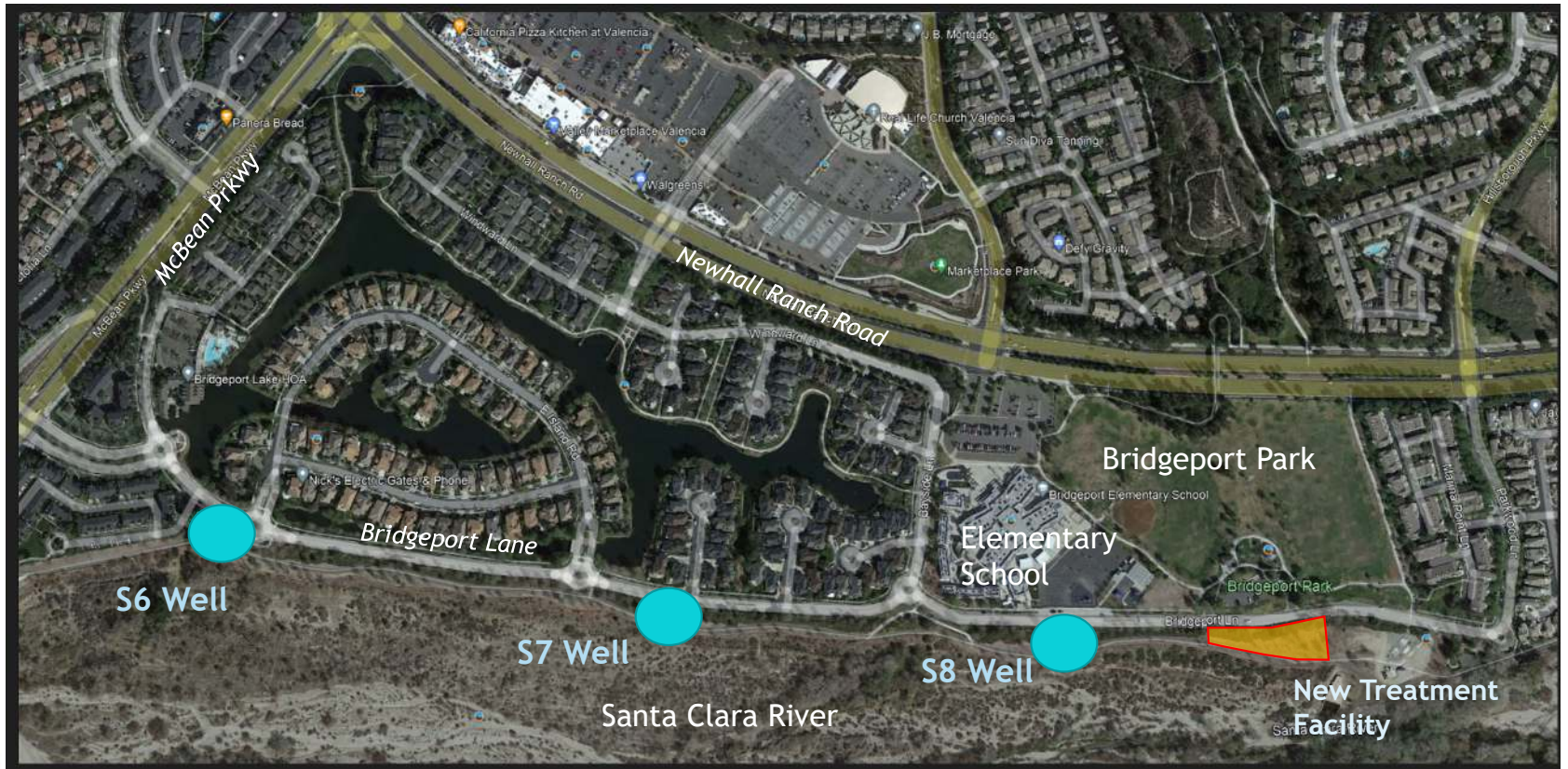


YOURSCVWATER.COM

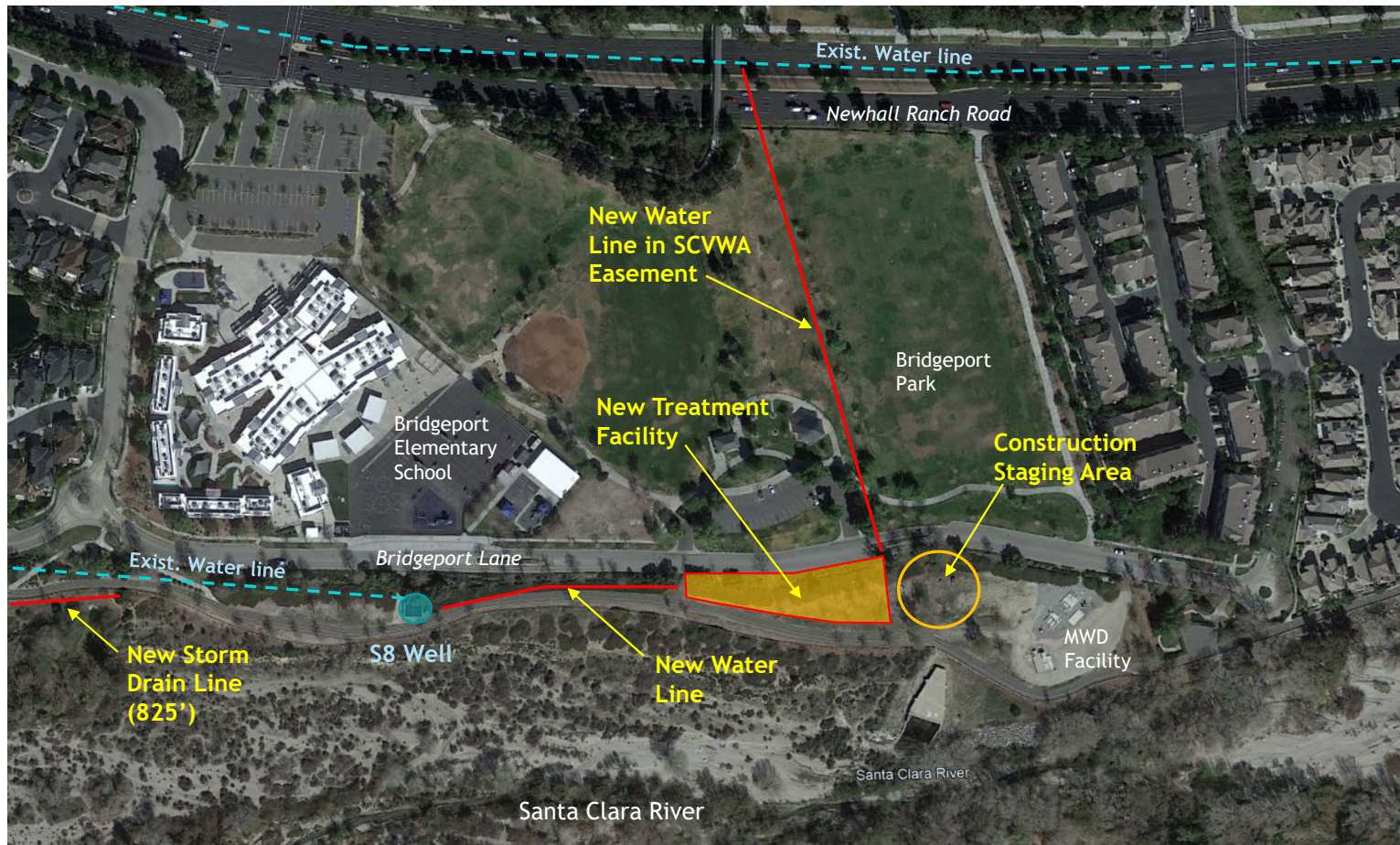


S Wells Locations

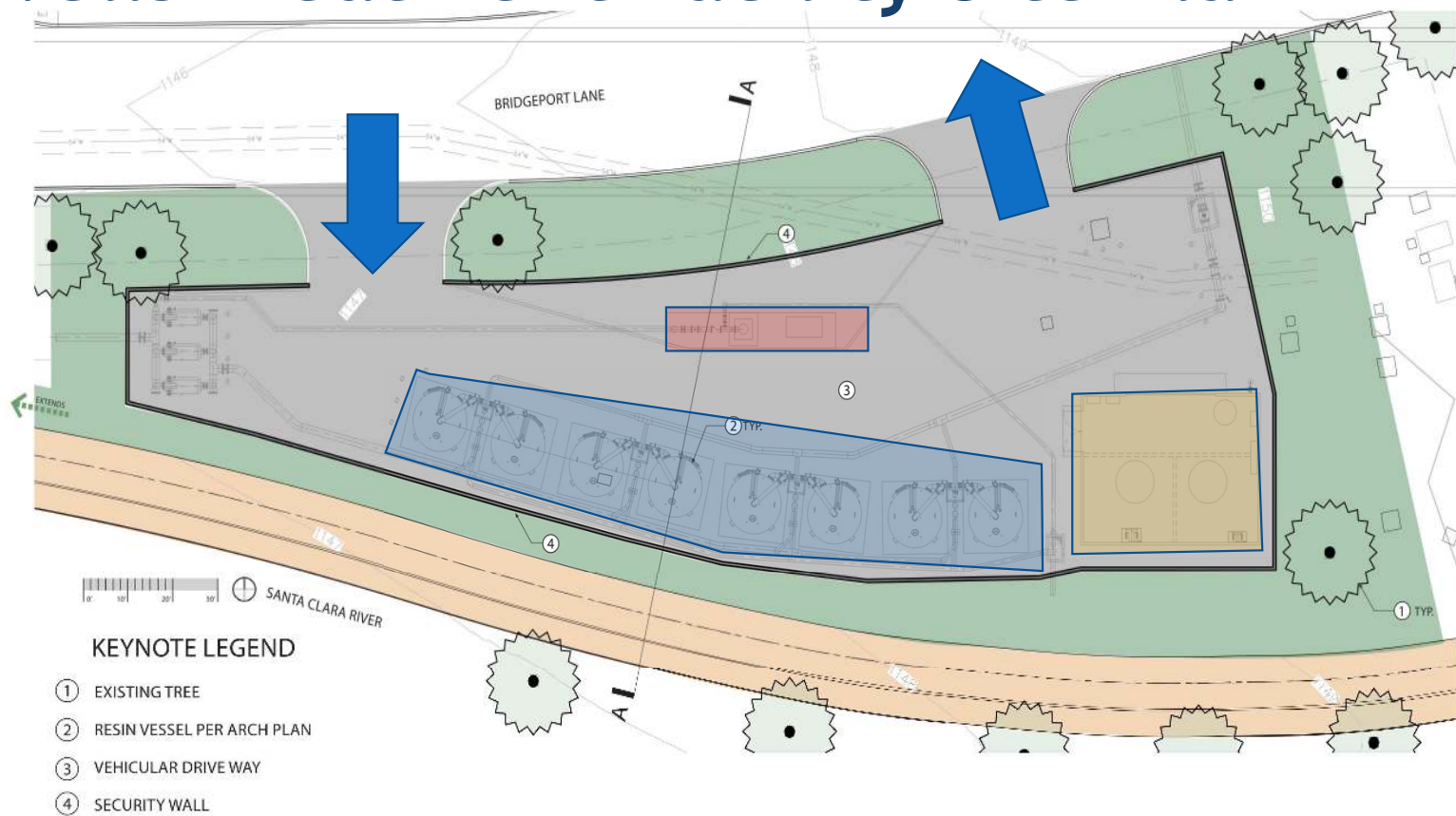
Permitted Capacity of up to 9,677 Acre-Feet per year



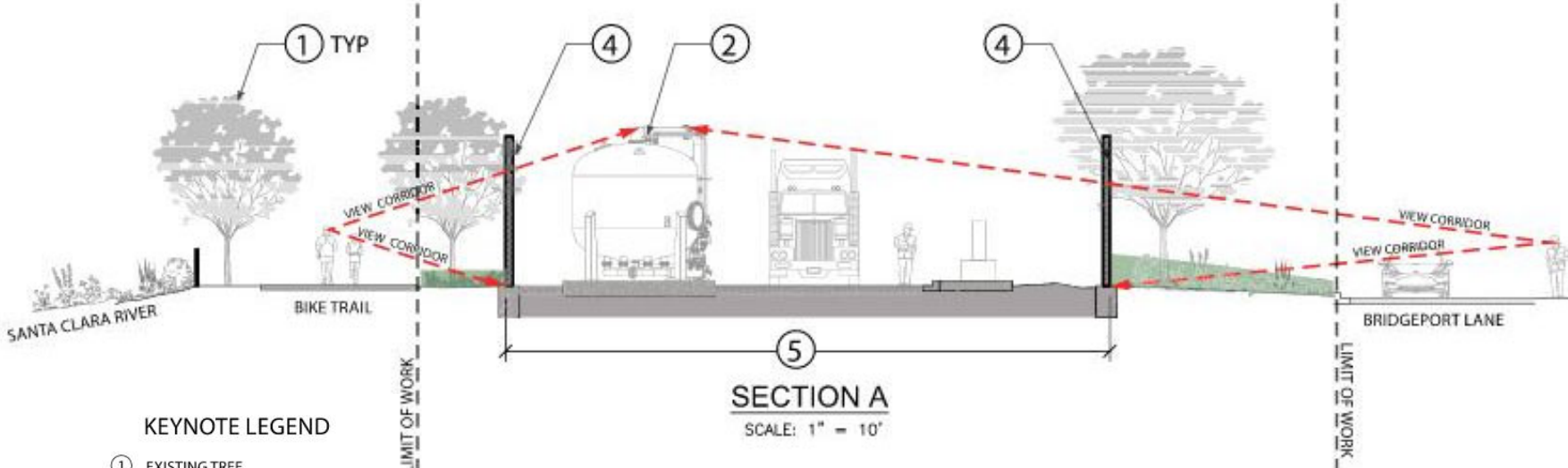
S Wells Treatment Facility Location



S Wells Treatment Facility Site Plan



S Wells Treatment Facility Section



KEYNOTE LEGEND

- ① EXISTING TREE
- ② RESIN VESSEL PER ARCH PLAN
- ③ VEHICULAR DRIVE WAY
- ④ INCLOSURE WALL
- ⑤ PROPOSED ENCLOSURE
- ⑥ VEHICULAR GATE

S Wells Treatment Facility

Looking east

Looking west

Before



After



Views from Bridgeport Lane



S Wells Treatment Facility

Looking east

Looking west

Before



After



Views from Bike Trail

S Wells Treatment Facility



East to West on Bridgeport Lane

YOURSCVWATER.COM



S Wells Treatment Facility



West to East on Bike Trail

YOURSCVWATER.COM



S Wells Treatment Facility

APPROACH 1

Community Courtyard



S Wells Treatment Facility

APPROACH 2

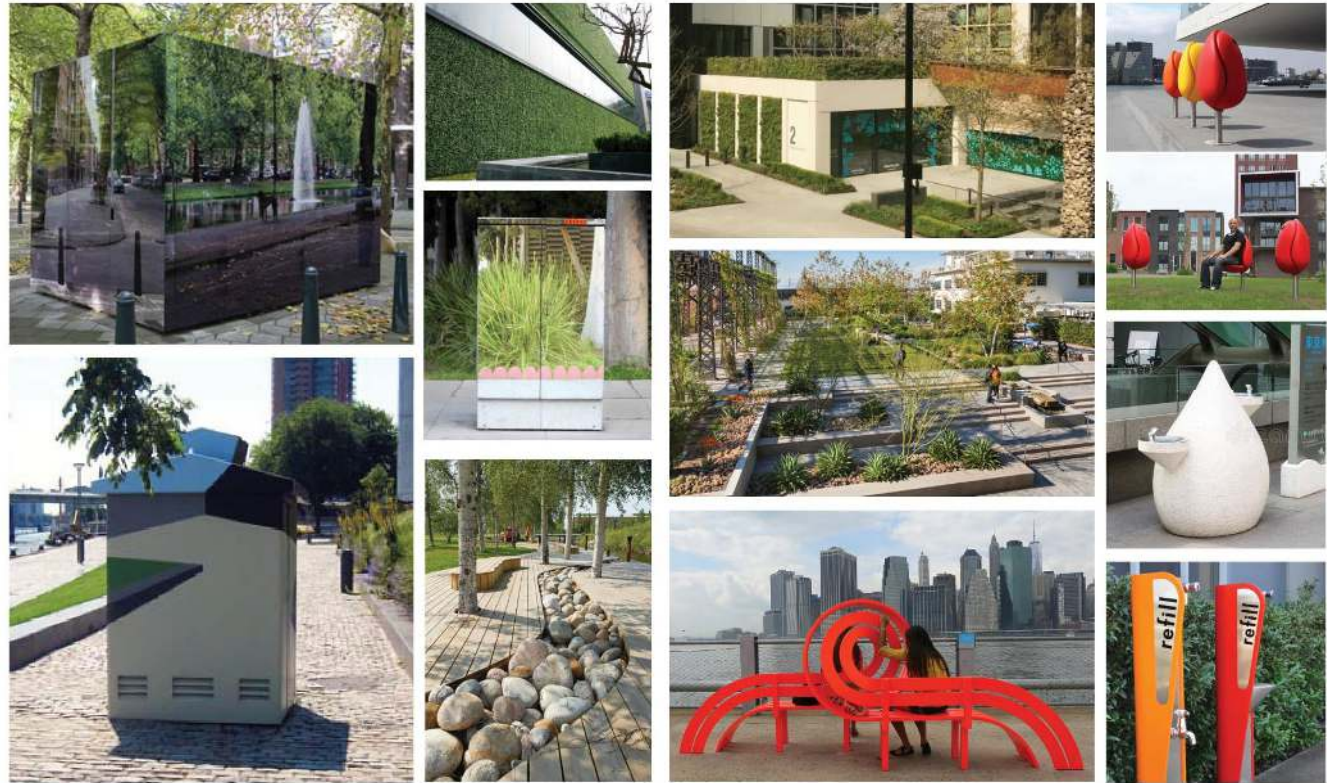
River Garden



S Wells Treatment Facility

APPROACH 3

Art Park



Thank You!

For more information :

Email: swells@scvwa.org

Phone: 661-705-7253

Or visit our website at:

<https://yourscvwater.com>

